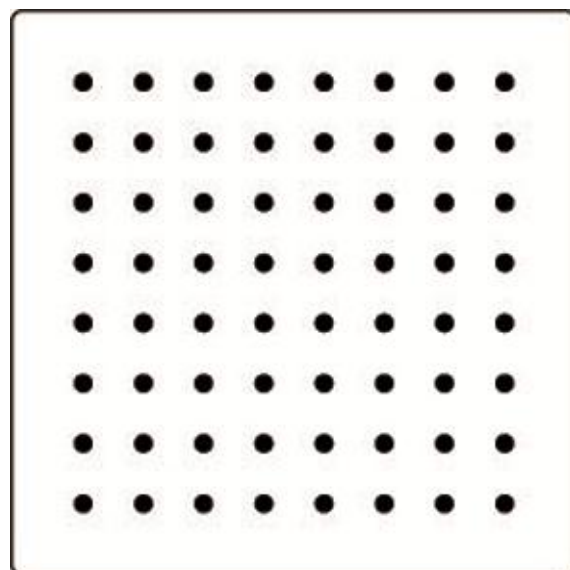




# Product information

Series AMI

## Built-in door loudspeaker module AMI11100



### ***Note on the validity of this product information***

This product information states specific information on the module.

It is only valid in combination with the enclosed product information *Modules of the series AMI in front-door stations*.

## Scope of delivery

- 1 x Built-in door loudspeaker module AMI11100
  - 3 x Spacer foil 0.5 mm
  - 1 x 4-pin connecting cable
  - 4 x Securing nut M4
  - 1 x Screwdriver with round handle
- Product information built-in door loudspeaker module AMI11100  
Product information modules of the Series AMI in front-door stations

## Intended use

- The built-in door loudspeaker module AMI11100 is a module for front-door stations of the series AMI.
- It can be used in combination with other modules of the series AMI (except for functional group display modules).

## Short description

- Connection for bell button module via 4-pin plug connector
- Voice-controlled hands-free talking (standard)
- Full duplex hands-free talking can be activated for indoor stations with handset
- 2 indoor stations can be allocated to any bell button provided on site
- Error detection and display
- Volume and volume acknowledgement tone can be adjusted manually
- Pluggable memory to replace front-door stations identical in construction
- Further slot to read-in TCU2 memory
- R-terminal to extend functionality – door release

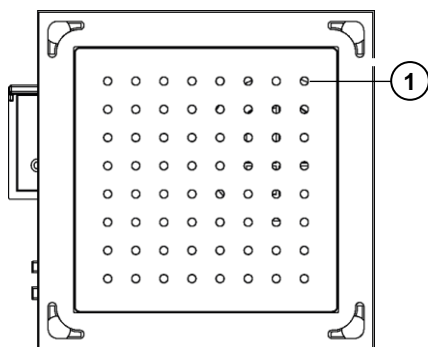
## Technical data

supply voltage	+24 V ± 8 % (power supply and control unit)
housing	plastics
frame with hole lattice	aluminium, anodised
H x W x D	105 x 115 x 48 mm
weight	275 g
acceptable ambient temperature	-25 °C to +55 °C
input current standby	I(a) = 0.1 mA, I(P) = 4.4 mA
max. input current	I(Pmax) = 140 mA

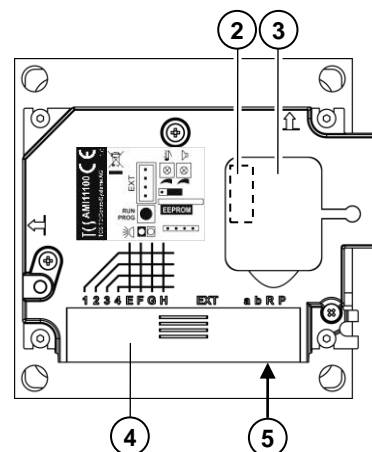
3-wire technique necessary!

3-wire technique necessary to connect FAA1100 (TOER1)!

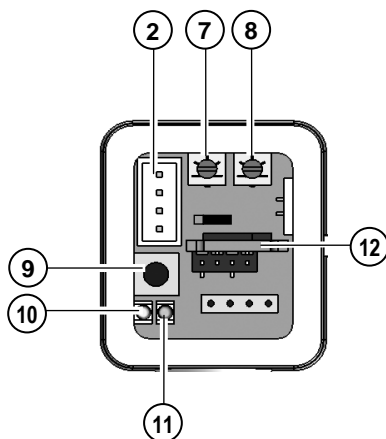
## Overview



- 1 **Microphone**
- 2 **Connection** for another **Module** with 4-pin connecting cable (e.g. bell button module AMI1090x) and **Service Device**
- 3 **Service opening with cover**
- 4 **Terminal cover**
- 5 **Connection** **TCS:BUS®** pluggable screw terminal



### Service opening



- 2 **Connection** for another **Module** with 4-pin connecting cable (e.g. bell button module AMI1090x) and **Service Device**
- 7 **Control volume acknowledgement tone**
- 8 **Control volume loudspeaker**
- 9 **Programming push button**
- 10 **Programming LED, red**
- 11 **Operation LED, green**  
(operation and error indication)
- 12 **EEPROM**

## Installation

### Installation

The built-in door loudspeaker module must always be installed horizontally into the front panel (terminals face down).

## Connecting the lines

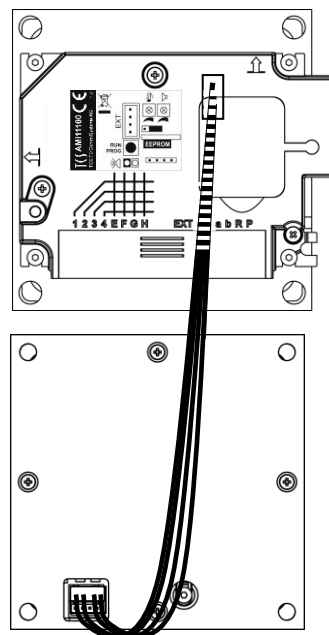
### Connect the module within the front-door station

AMI11100

After the installation into the front panel, the modules themselves have to be wired.

The built-in door loudspeaker module can be connected to a module with a 4-pin connecting cable (e.g. bell button module):

- Remove the cover of the service opening.
- Guide the cable upwards from the terminals and push it slightly under the module housing. Plug the connection cable with 4 pins on the service socket in the service opening.
- Close the service opening and the terminal cover.



Bell button  
module I  
AMI1090x

### Connect the module to the TCS:BUS®

- Das Einbau-Türlautsprechermodul wird direkt am TCS:BUS® angeschlossen (3-Drahttechnik, a b P).

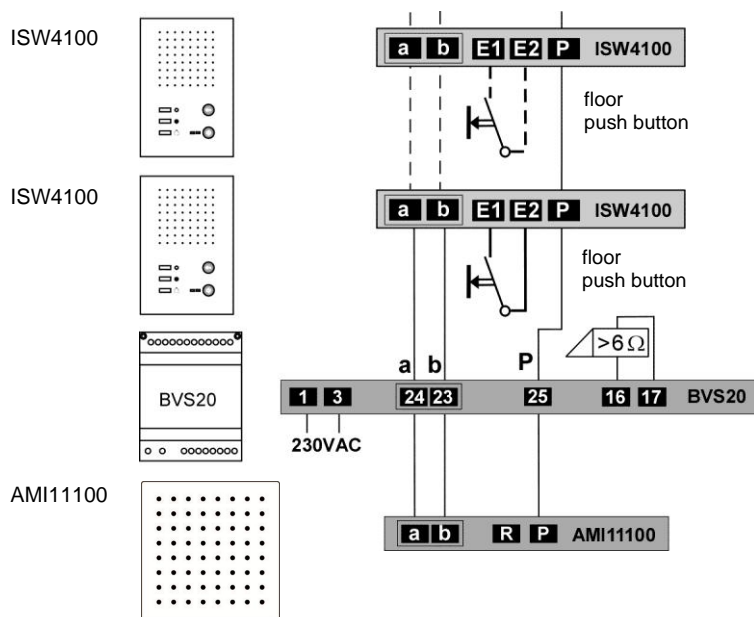
### Notes on connecting the module with a system

- 3-wire technique necessary!
- Connect buttons from other systems (e.g. elevator):  
The buttons must be potential-free. It may be necessary to insert a relay for decoupling in order to guarantee that the buttons are potential-free.
- Connecting other consumers:

**!** It is not allowed to connect further consumers such as tubular lamps, light bulbs or others to the ASI11000. For this, a separate transformer must be used.

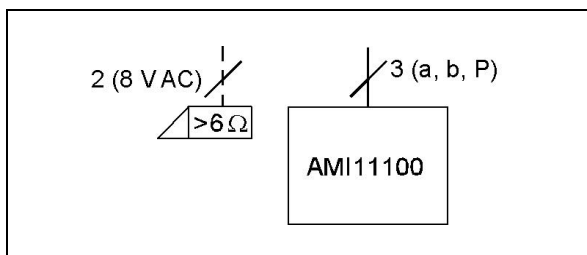
- The max. number of indoor stations depends on the type of indoor station (comp. Product information of the indoor station).
- Attention: When using a FAA1100, the door release time of the power supply and control unit must be set to maximum!

### Wiring example 3-wire operation



**!** If more than one front-door station is installed, an additional door release relay (FAA1100-0600) must be used! Not enclosed in the delivery. Can be ordered from TCS.

### Connection diagram



### Connecting line

Acceptable wire cross-section (diameter): 0.08 ... 0.82 mm<sup>2</sup> (0.32 ... 1.0 mm)

### Max. number of wires per terminal contact:

connection bell buttons: each 2 x 0.8 mm,

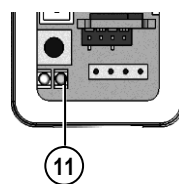
connection TCS:BUS<sup>®</sup>: 3 x 0.6 mm or 2 x 0.8 mm

**!** Further wires must be connected with auxilliary terminals!

**!** Only use connecting lines with the same diameter within a terminal contact.

## Error detection and indication

Errors are displayed optically and acoustically: one-time error tone and constant flashing of the operation-LED, green. When pressing a button at a connected bell button module, the error tone sounds again. The optical error indication stays active until the error has been fixed.



11 Operation-LED, green

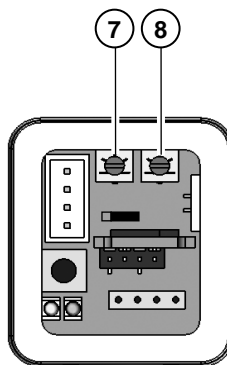
Error causes	Display	Error tone	Solution
EEPROM is missing or plugged incorrectly			Insert EEPROM, switch on the main voltage again!
a- and P-wire interchanged or short-circuited	Operation-LED, green flashes (1:7, 1 Hz)		Interchange a- and P-wire or remove short circuit, device returns to standby mode
a-wire not connected			Connect a-wire, device returns to standby mode
Button sticks (press longer than 15 seconds)			Release button, device returns to standby mode

## Settings

### Adjust volume of speech and acknowledgement tones

! Use the enclosed small screwdriver to adjust the setting!

- Open the cover of the device opening.
- The volume of speech (loudspeaker) and acknowledgement tones can be adjusted via two separate controls.
- The volume is set ex works to an average value.



7 Control acknowledgement tones

8 Control volume loudspeaker

## Configuration

### Settings ex works

Communication time	56 s
Door call standby time	56 s
Door release time	3 s

**Configuration options\***

Function	manually	TCSK-01	configo™
AS-address	–	x	x
Communication time	–	x	x
Door release time	–	x	x
Door standby time	–	x	x
Programming lock (ON/OFF)	–	x	x
Type of acknowledgement tones	–	x	x
Communication only when door standby active (ON/OFF)	–	x	x
Light switch function (via door release button of the indoor stations) ON/OFF	–	x	x
Volume of speech Sprechen	x	–	–
Volume of acknowledgement tones	x	–	–
Send any control function when pressing a bell button (serial number of the control function = serial number of ASI11000)	–	–	x
Bell button programming	x	x	x
Send a 16 bit door release command	–	–	x
Door release only when door standby is active	–	x	x

\* The configuration of AMI11100 with the configuration software configo™ must be carried out the same way as the configuration of ASI11000.

**Set AS-address**

When combining the door loudspeaker module or the display module AMI1010x with a bell button module AMI1090x the following must be observed:

- The AS-addresses of the built-in door loudspeaker module and bell button module resp. display module must be the same in order to make a connection.
- Set the AS-addresses to the correct value and place a lock on these addresses.

**Bell button programming**

Refer to *Product information Bell button module AMI1090x*.

**Set functions**

Buttons of a connected bell button module which are not allocated, can be used for switching functions:

<b>Switching lights via bell button</b>	Do not programme the button resp. delete programming
<b>Send control function</b>	Set function with device configurator configo™ einrichten

## Repair

### Note

For maintenance, the connections, display LED and push buttons of the module are easily accessible without having to loosen screws. Open the cover of the service opening (see *Overview*).

The exchange programming mode cannot be activated when:

- The LED operation indication, green blinks slowly (the programming mode of the system is activated at the power supply and control unit) or
- The LED, green flashes (error indication).

**!** ATTENTION!  
Remove and insert an EEPROM only when in idle condition!

## Accessory

Short text	Article number
Maintenance package	FBI1210-0

## Service

For questions please contact  
**hotline@tcsag.de**

### Headquarters

TCS TürControlSysteme AG, Geschwister-Scholl-Str. 7, D - 39307 Genthin  
Tel.: +49 (0) 39 33 / 87 99 10, Fax: +49 (0) 39 33 / 87 99 11, E-Mail: [info@tcs-germany.de](mailto:info@tcs-germany.de), Internet:  
[www.tcsag.de](http://www.tcsag.de)